

First Choice.



 **viking**
yachts
For those who demand the best.

Viking 50 Open

On Target

Answering strong market demand for a 50-foot Open tournament contender and cruising yacht, Viking has responded with the innovation and insight you'd expect of the world's leading builder of premium sportfishermen. An ingeniously functional layout puts the captain within steps of the cockpit, accommodations and guests. Whether you fish or cruise, you'll appreciate her gorgeous low-profile design, the latest fruit of Viking's experience building thousands of sportfishermen in this size range.

The helm's proximity to the cockpit means that couples can easily handle the 50 Open alone, whether playing an agile gamefish or maneuvering into a slip. After one sea trial, you'll agree that the yacht's open-ocean performance and sea-keeping personality are unsurpassed. The low center of gravity makes the 50 Open incredibly stable and comfortable, adding to your at-sea enjoyment and sense of security.

A Yacht You Can Call Home

A user-friendly layout makes the salon a true home-away-from-home for any yachting family. The spacious, elegantly appointed lower deck is available in one- or two-stateroom layouts. With several choices of decor, the salon, galley and accommodations are bound to please.

Forward to port in the full-beam salon, the roomy L-shaped dinette features available rod storage below and a high-low adjustable dining table. The day head is conveniently located next to the companionway stairs, while just forward, a lounge seat quickly converts to over-and-under single berths. Reverse-cycle air conditioning—with separate zones in the salon and master stateroom—and an entertainment center with television, VCR and CD stereo are standard.

It's All in the Preparation

Centrally located in the salon, the galley is well suited to be the yacht's hub of activity. The fully equipped galley features an under-counter refrigerator-freezer with icemaker, a two-burner electric stove, microwave-convection oven, and plenty of counter and storage space. Also included are an exhaust fan, garbage disposal, instant hot water and dish and glass compartments.



Length, overall (L.O.A.)	50 ft. 7 in. (15.5 m.)
Beam	16 ft. 4 in. (5.0 m.)
Draft	4 ft. 9 in. (1.5 m.)
Height, waterline to hardtop	11 ft. 5 in. (3.5 m.)
Gross Weight approx.	55,700 lbs. (25,266 kg.)
Fuel capacity	805 gal. (3,047 L.)
Water capacity	208 gal. (787 L.)
Cockpit Size	144 sq. ft. (13.4 m ²)

VIKING 50
[open sportfish]

"The huge raised bridgedeck offers excellent visibility from the centerline helm. The saloon beneath the foredeck offers an equally spacious and versatile layout."

POWER AND MOTORYACHT



"Viking's new 50-foot Open Sportfish is a force to be reckoned with, both offshore and in the marketplace."

POWER AND MOTORYACHT





[daybench in salon converts to upper and lower bunks]



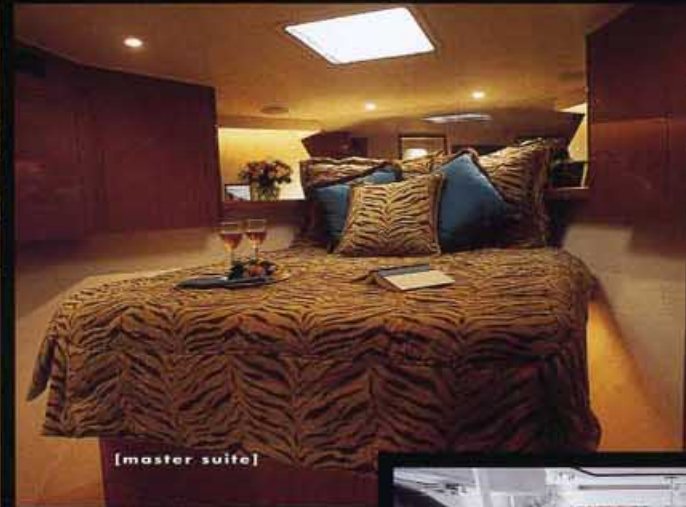
VIKING 50
[open sportfish]

Soothing Surroundings

The 50 Open's master stateroom has a queen-size island berth which lifts effortlessly for access below, under-berth drawers, a cedar hanging locker, overhead opening hatch, television, available entertainment center, individual climate control and generous storage space throughout. Private access leads to the master head—which is also accessible from the companionway—with its sink and vanity storage, exhaust fan and an enclosed shower. An available second stateroom replaces the salon's starboard-side convertible lounge, and a central vacuum system adds cruising convenience.



[master head]



[master suite]



[guest head]

Built Viking Tough

The 50 Open's composite construction blends strength and structural integrity with significant weight savings. Structurally, the boat consists of just two major fiberglass components—the hull, and the superstructure which extends from the bow to the cockpit liner and built-in tackle center. Once mechanically fastened and fiberglassed together, the boat becomes an inherently strong and aesthetically clean single component.

Viking's steel I-beam engine beds are mounted on low intermediate bulkheads fore and aft of the engines, evenly transmitting their weight and thrust to the hull. This unique design places the engines lower in the boat, decreasing shaft angles and improving stability while providing excellent access to the engines. Viking's corrosion-proof composite fiberglass fuel tanks maximize propulsion reliability while adding further strength to the hull.



engine gauge package at engine room entrance.

"Everything in the engine room is laid out to provide maximum accessibility."

POWER AND MOTORYACHT

Engineering Excellence

Cockpit stairs lead to the gleaming white, brightly-lit engine room which is laid out with MILSPEC precision. Unhampered maintenance accessibility translates directly into maximum service life and at-sea reliability, and full 5'6" headroom provides unparalleled working comfort in this acoustically sealed compartment.



Aircraft-type fuel lines, fuel priming pumps, protected wiring cableways, built-in oil changing systems, fixed fire protection equipment and Y-valve emergency bilge pumps are just a few of the components on which Viking lavishes its textbook engineering acumen. An engine room gauge package is conveniently located at the cockpit entrance to make checking on machinery status that much easier and faster—just the sort of attention to detail you'd expect of Viking.

Now On Deck

The 124 sq. ft. raised command deck offers excellent all-around visibility through an expansive, beautifully proportioned windshield. Flush all-fiberglass doors, angled electronics flats, an innovative radio box and an available Palm Beach-style helm pod with single-level engine controls reflect Viking's sportfishing savvy. Drinks are close at hand with a refrigerator and icemaker to starboard. There's plenty of room for family and friends with helm companion seats and comfortable lounge seating for twelve with rod storage below. A sleek hardtop, full soft enclosure, climate control and a radar arch are all available. The yacht's wide sidedecks and foredeck are covered with molded nonskid for safety and a large anchor storage locker is provided forward.



Watch Out Fish

The 144-square-foot cockpit is built for serious fishermen. There's a bait-prep center with freezer and tackle cabinet, gaff storage locker, transom door, fresh- and sea-water washdowns, recessed fish boxes and a shore-power cable handling system. An in-deck livewell, refrigerated fishbox, transom baitwell, icemaker and swim platform are available, and the 50 Open can even be delivered tournament-ready right from the factory.



Long Distance Service

The 50 Open will thrill the most demanding fishing or cruising yachtsman with its power, maneuverability and sheer speed. Viking's time-tested hull design provides a soft, dry and seakindly ride in real-world offshore conditions. Handling is crisp and precise, with the 50 Open born to slice nonchalantly through the seas on its way to distant fishing grounds. And, of course, the very same elements that make the 50 Open embody the ideal sportfisherman—speed, comfort, range and unequalled seakeeping ability—make it a superb cruising yacht, too.

Finest Kind

With their renowned engineering, precision craftsmanship and attention to detail, Viking yachts are widely acknowledged to be the finest semi-custom yachts in the world today. Viking's extensive in-house manufacturing capability produces the highest possible level of quality control, and owners can personalize their investments with custom features and amenities. Last, but not least, Viking's perfectionism pays dividends with preferred insurance risk status and higher resale values.

An 'Open' Invitation

Once you've taken her for a test ride, you'll agree that the Viking 50 Open is the *First Choice* in premium sportfishing yachts. See for yourself at your Viking Yachts dealer, or visit us in New Gretna for a personal tour.



viking
yachts

For those who demand the best.



"On the Bass River," Route 9, New Gretna, New Jersey 08224 U.S.A. • Tel (609) 296-6000 • Fax (609) 296-3956

For full details and the name of the Viking dealer nearest you, contact Viking Yacht Company.

The right is reserved to make changes, without notice, at any time, in equipment, materials, prices, and specifications. Accommodation drawings and photos may show some optional equipment.